



NOTES FROM THE PRESIDENT'S DESK

October 25, 2012 Volume 12 Issue 5

A great, big KUDOS goes to our Rockheads for the stupendous job they did with their presentations and displays at the September 15th meeting. I am sorry that I was not there to witness their efforts in person, but from the photos, I can tell that they did a good job and made me very proud! It looks like they are well on their way to completing several of the FRA badges and I know that we will be giving out some of our club's own Junior Rockhound of the Year awards and certificates come December.

Fall is a great time for field trips and we have two more fossil collecting ones scheduled. Our October trip will be to the old lime quarry near Guntown and then in November, we will be joining the Alabama Paleontological Society for a trip to one of their coal mine locales. Be sure to bring a few of the fossils that you collect to the November meeting, where we will show you how to clean and preserve them. We are also completing the club's 2013 schedule of meeting programs and it is looking like we will be having a lot going on. Roger Lambert has been working very hard, along with Rae Mathis of the Oren Dunn Museum in Tupelo, to put together a display and possibly a geology program for February.

Fall is the time of year in which we nominate the new slate of officers who will serve for the next year. We are also looking for members interested in serving as committee chairpersons or who are willing to help out on any of the committees. So please step up to the plate and volunteer. We have a lot of members who are very capable and to grow as an organization, we need new and fresh ideas. Remember, you will get a whole lot more out of an organization by putting a bit of yourself into it.

Don't forget to mark October 27th on your calendars and pass the word around about our 3rd annual picnic/rock swap at Ballard Park in Tupelo. This is when we get together with fellow rock hounds, to share some good food, fun activities and swap the extras from our collections or have a chance to bid on some very interesting items at the auction. Please check your stash for anything that you could donate for our club auction. Another date to mark on the calendar is the Nov. 10th wrapped leather bracelet class that we will be teaching for the West Point Arts Council. Pass the word around, as these classes are always great fun and you will learn a skill while creating a fantastic bracelet.

So, as you can see, we still have a lot of things planned for the rest of the 2012 calendar year. There is bound to be something for everyone. I am looking forward to a great fall session and planning to see you all at the picnic!

NANCY ROBERTS



Nancy by a stupendous creek. .
Photo by Jim Roberts

Above: ✱ Marks the spot! Two Mosasaur vertebrae were discovered in this particular wash. Others were found nearby. A total of 9 were found in that general area. They were found during the Oct 20 Field Trip to Birmingham Ridge. The site is Upper Cretaceous, Demopolis Formation, Middle Chalk.



Left: the two vert that were found together. None of the other appeared contiguous and Dana tried. These would seem to be from the tail. Above and left photo by Dana Jones



Sunday, Nov. 4th
and will be a joint
trip with the
Alabama
Paleontological
Society to an
Alabama coal mine
for Pennsylvanian
plant fossils. contact
Nancy
Therockhoundlady@yahoo.com
[O.COM](http://www.therockhoundlady.com)

See page 5 for further details

What's Inside

Meeting Minutes p 2

Calendar
Bead Soup
Guess What It Is
Workshop p 3

Old Bones p 4

Rockheads
Announcements
Mea Culpa
Field Trip p 5

Field Trip Cont
Meeting
Safety/Travel Advice
Travel Photo p 6

October 27
Annual Picnic and Rock
Swap 11 AM-4 PM
Large Pavilion at Ballard
Park
Tupelo, MS See p 5

NMGMS Meeting Minutes



September 2012

Pledge of Allegiance to the Flag was given by Roger Lambert, Mathew Lambert, and Andrew Diaz.

Introduction of Guest:

Tammy & Andrew Patrick (Bartlett, TN) & Evelyn & Shirley Randle (Starkville, MS)

The minutes of the May meeting were approved as printed in the Nugget.

Treasurer's Report: Closing balance as of September 15th, \$1283.37

Review of Committees:

Field Trips: There was some interest in having an October field trip to Birmingham Ridge; date for the trip would be October 20th. The November field trip will be on **Sunday, Nov. 4th** in conjunction with APS to a coal mine site for Pennsylvanian plant fossils. More information to come so watch your email. A possible Dec. trip to the quarry at Parsons, TN for Devonian fossils, was discussed. It will depend upon the mine allowing groups to collect.

Publicity: (Bob Reinhaus). We are going to need some more flyers printed up soon.

Membership: (Ann Byzet). We have the 2012 membership roster available. We have 100 members.

Hospitality: October Picnic: The club will furnish hot dogs; members are asked to bring desserts.

Nov: Nikki Kenny, Robert Langford and Roger Lambert

Website (John Byzet) Website has been updated.... Check us out at www.nmgms.org

If anyone has photos from the May Kumihimo class in West Point, please email them to John Byzet and Nancy Roberts.

Newsletter (Dana Jones) Two new sections have been added to the Nugget. Bead Soup and Old Bones are categories for all members to contribute to, as a place to share information, tips, ideas, and web sites. If taking interesting trips this summer, everyone is encouraged to drop Dana an email about it, so we can insert that in the summer issue of the newsletter. nuggeteditor@gmail.com A big "Thank You" to those of you who have been writing articles for the newsletter!

Youth Members (Bernice Burkeen) The vest made by Bernice was distributed to youth member for their FRA badges earned in the upcoming year. (**Juniors should work on personalizing their vests**)

Stamps: If there are any to turn in, give them to Mary Reed or Kathy Westbrook

Historian: (Susan Curry) If you take photos at any NMGMS event, please print out a few to submit to Susan for the yearbooks.

Show/Kids Day (Roger Loyd, Bob Reinhaus, John Byzet and Robert Langford): No new information on locations and costs at this time. It was suggested to meet with Janice Anthony who works for the city and might have some ideas or advice for us and possible tie in with another Tupelo activity like one of the festivals, where it would be outdoors and we wouldn't have to rent a building. Patti Thompson's parking lot or the Linc Center parking lot?

Old Business:

We will be needing donations for the club auction to be held at our October picnic. You may also want to check out your collections and see if you have any extras to trade.

Nancy has purchased a book about fossils which NMGMS will donate to the library in memory of member Cecil Perkins.

New Business:

NMGMS will be teaching a wrapped leather beaded bracelet class in conjunction with the West Point Arts Council on Saturday, Nov. 10, 2011 from 10 until 4 at the Episcopal Church of the Incarnation, 103 W. Broad Street in West Point. Bring a brown bag lunch. We will need members to volunteer to help as assistants again. Please email Nancy Roberts (therockhoundlady@yahoo.com 731-727-5574) or Souzen Steelhammer (souzendeavers@aol.com 602-494-7288), if you can help with this class. The October meeting is the NMGMS picnic/rock swap on **October 27th from 11 until 4p.m.** at the large pavilion in Ballard Park, which is on the west side of the lake. We will have the "Buy it now or Bid" silent auction, grab bags for sale and the "Fishing Game" for the kids. We will also have hot dogs, chips and drinks provided by the club and members are asked to bring a dessert. Invite a friend!!!!!!

Rae Mathis from the Oren Dunn Museum has asked if NMGMS would like to set up a display at the museum in one of the large cases there. We have agreed to do this and will be setting this up later this year. We will need any large specimens from north MS (rocks, or fossils) that members would be willing to place on loan for this display.

It is time to start thinking about our club's 2013 officers. We need a few volunteers for the nomination committee. Names of possible candidates will be presented at the Nov. meeting for election. We have been asking officers to serve a two year term. Tabled until November meeting.

Reminder to the group the Nov. 17th meeting will be at the Tupelo library from 1 to 3p.m. and the program will be "Cleaning and Preserving Fossil Specimens". This will be a "hands-on" program.

Is there any other new business????

Reminder: There is no October meeting at the library on the 20th. Please return the name tags to the basket before you leave. **Is there anyone who needs a name tag printed up for them?**

Motion to Adjourn.....

Roger is properly abashed for having importuned Andrew...alas Belinda is making notes of the incident.
Photo John Byzet



2012 Officers

President/Field Trip Chair:

Nancy Roberts
25 Amber Lane
Counce, TN 38326
(731)689-5336
therockhoundlady@yahoo.com

Vice-President:

Roger Lambert
1817 CR 7002
Corinth, MS 38834
(662)286-3750
roger.lambertjr@yahoo.com

Secretary:

Belinda Loyd
7834 Cherry Valley
Southaven, MS 38671
(662)280-1317
bloyd_utlady@yahoo.com

Treasurer/Webspinner:

John Byzet
1209 Queensgate Dr
Tupelo, MS 38801
(662)844-9841
wa4jax@comcast.net

Appointees

Historian:

Susan Curry
P.O. Box 61
Mathiston, MS 39752
(662)312-1988
sgecurry@netdoor.com

Stamp Chair:

Kathy Westbrook
2753 HWY 82W
Starkville, MS 39759
(662)324-1601
k-westbrook2010@hotmail.com

Publicity Chair

Bob Reinhaus
150 Wright Lane
Counce, TN 38326
(662)872-0461
gulfssouthern@gmail.com

Membership:

Ann Byzet
1209 Queensgate Dr
Tupelo, MS 38801
(662)844-9841
annbyzet@comcast.com

Hospitality:

Robin Langford
121 Willow Creek Rd
Saltville, MS 38866
(662)869-2278

Nugget Editor:

Dana Jones
1868 HWY 310
Waterford, MS 38685
nuggeteditor@gmail.com

Youth Leader:

Bernice Burkeen
214 South Highland Dr
Tupelo, MS 38801
bburkeen@wildblue.net

Mark Your Calendar

October 27

Annual Picnic and Rock Swap
Large Pavilion at Ballard Park
Tupelo
11am-4pm

For a list of
rock and
gem shows:
[http://
www.amfed.
org/
shows.htm](http://www.amfed.org/shows.htm)

Rock and
Gem
magazine:
[www.rockng
em.com/
showdates](http://www.rockngem.com/showdates)

November 4

Field Trip
See p 5

November 17

Tupelo Library from 1-3pm
Fossil Cleaning and Prep

December 15

Tupelo Library 10:30am-3pm
Christmas Potluck

January 19

Tupelo Library 1-3pm

October 27, 2012

Tupelo, MS

North Mississippi Gem and Mineral Society
Annual Picnic and Rock Swap
Large Pavilion Ballard Park
Sat 11am-4pm
Admission is free
Contact Nancy Phillips
[THEROCKHOUNDLADY@YAHOO.COM](mailto:therockhoundlady@yahoo.com)

November 9-11, 2012

Ocean Springs, MS

Mississippi Gulf Coast Gem and Mineral Society
Magnolia State Gem, Mineral and Jewelry Show
Jackson County Fairgrounds Municipal Center
Fri & Sat 10-6, Sun 11-5
Admission is charged
Contact John Guglik: (228) 818-5412
jguglik@cableone.net

November 16-18, 2012

Marietta, GA

Cobb County Gem and Mineral Society
27th Annual Rock, Mineral & Jewelry Show
Cobb County Civic Center
Fri & Sat 10-6, Sun 10-5
Free Admission
Contact Mary Ingram: (404)915-3588
mandmingram@gmail.com

November 17-18, 2012

West Palm Beach, FL

Gem & Mineral Society of the Palm Beaches
46th Annual Gem, Mineral, Jewelry, Bead and Fossil Show
South Florida Fairgrounds Expo Center East
Sat 9-6, Sun 10-5
Free Parking Admission is charged
<http://www.gemandmineral.cc>

November 23-25, 2012

Mobile, AL

Mobile Rock & Gem Society
Gem, Jewelry, Mineral and Fossil Show
Abba Temple Shrine
Fri 2-7, Sat 9-6, Sun 10-5
Contact Jim Patterson (251)510-85228
jimandde@mobile.com

November 30-December 2, 2012

Montgomery, AL

Montgomery Gem & Mineral Society
42nd Annual Montgomery Gem, Mineral and Jewelry Show
Garrett Coliseum
Fri 9-6 Sat 10-6; Sun 11-5
Free Admission and Parking
Contact: Jane Barkley, (334) 277-2722 or
Iris McGehee, (334) 262-7275.

December 8-9, 2012

Franklin, TN

Mid-Tennessee Gem & Mineral Society
Gem, Jewelry, Mineral, Fossil Show & Sale
Williamson County Ag Expo Park
Sat 9-6, Sun 10-5
Admission is charged
www.MTGMS.org
Contact John Stanley (615) 885-5704
show@mtgms.org

January 11-13, 2013

Largo, FL

Pinellas Geological Society
37th Annual Gem, Jewelry and Mineral Show
Largo Cultural Center
Fri & Sat 10-6, Sun 12-5
Admission free
Contact Hugh Sheffield (727) 894-2440 or
cell (727) 707-3236



Bead Soup

A place to share knowledge about the
lapidary arts.



Workshop

Nov.10, 2012
West Point, MS
Sat 10 a.m. until 4p.m.

Episcopal Church of the
Incarnation
103 W. Broad Street
Bring a brown bag lunch.

These tips are from "Best of Step by Step Wire Jewelry":

When your silver- or gold-colored copper-core wire shows copper on the cut ends: Use Krylon gold and copper leafing pens to coat the ends with a small dot of paint. This covers the copper core for a perfect polished look. -Leah Helmrich

Save all of those little silica gel desiccant packets that are packaged with handbags, shoes, etc. They are tiny dehumidifiers and absorb moisture. If you slip them into a bag with your sterling silver wire, they will help to retard tarnishing.

Note: Silica gel is non-toxic, non-flammable, and non-reactive and stable with ordinary usage. Silica gel is irritating to the respiratory tract and may cause irritation of the digestive tract, and dust from the beads may cause irritation to the skin and eyes, so precautions should be taken. Silica gel may be doped with a moisture indicator that causes it to change color when it transitions from dry to wet. It is these indicators that are toxic.

Contributions? Please contact
nuggeteditor@gmail.com

THEROCKHOUNDLADY@YAHOO.COM



The North Mississippi Gem and Mineral Society, in conjunction with the West Point Arts Council, will be offering a class on Leather Wrap Bracelets with a Kumihimo review.

In this class, you will be making a double wrapped leather bracelet. The class kits will include all you need, but you should bring a favorite shank type button if you have one.

The class fee is \$35 per person. Class size is limited, so please register early.

For more information or to register for this class contact:

Nancy Roberts, therockhoundlady@yahoo.com 731-727-5574
Souzen Steelhammer, souzendeavors@aol.com 602-494-7288

The image last month was Giant's Causeway Ireland.

This monolithic limestone promontory is near Spain, and England-the 'ownership is highly disputed. Badly eroded marine fossils date it to Jurassic.

It also has a famous racehorse named after it.

Image courtesy of gibnet.com

Know what it is?

Contact

nuggeteditor@gmail.com

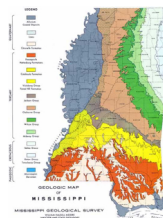


Left: the horse Giant's Causeway. He's much, ah....heftier these days. To spare his delicate feelings I choose an older photo. Thoroughbreds are touchy!
Image courtesy of coolmore.com



Old Bones

To share knowledge of fossil, gem, and mineral collecting and preparation.



Nobi the RockHound, menacing a tree trunk section.

Petrification

What Minerals Are In Petrified Wood?

The mineral content of petrified wood is easily identified using a mass spectrometer or X-ray diffraction technology. Silica, in the form of silicon dioxide (SiO₂), commonly known as quartz, is the most common replacement mineral. Often traces of other minerals give petrified wood its unique color and characteristics. Iron oxide will cause reds, browns, yellows and earth tones. Copper and chrome oxide create greens, silicates of aluminum produce whites, and manganese dioxide makes black.

Source: <http://www3.northern.edu/natsource/earth/Petrif1.html>

Petrified wood is a fossil of a woody plant preserved by permineralization through time by chemical and physical processes. In some cases, fossilized wood is readily identifiable. Generally, the species can be determined by examining thin slices of the fossil under a microscope. The microscopic structure of the fossilized wood is then compared to the cellular structure of living species.

How Does Petrified Wood Form?

The process of petrification is not completely understood because researchers have not been able to duplicate the process in the laboratory, where it can be observed and measured. But, certain conditions that must have existed for petrification to occur are known.

Oxygen, which causes oxidation or rotting of all types of materials, would have to have been kept away from the dead plant material to prevent it from decaying before it was preserved.

Most likely, the dead plant material was deprived of oxygen by being buried by sediments settling in water covering the plants. Much of the fossil wood found today is a product of ancient river and flood plain environments. After rapid burial, the tree reacts to percolating water.

Three things may happen. The log may disintegrate and not be fossilized. The log may be reduced by compression to a coal or it may become petrified. If petrification takes place, minerals from percolating water are deposited in fluid-filled openings in the wood. This process is called permineralization and it preserves the tissues of the wood.

In some situations minerals may also substitute for the woody tissues of the log. This process is called replacement. Most petrified woods are permineralized. The entire process is not fully understood but is being actively studied.

The final condition, necessary for petrification, is time. The mineral replacement process is very slow, probably taking millions of years.

A Scary Story by Dana Jones

About 30 years ago my father Doyle, Uncles David and Paul and I liberated a large amount of petrified wood from the clutches of evil loggers who were crushing it on purpose. It's all from one tree. We did it over a weekend, moving some that took all of us (I was 8-I question how much actual help I was for them) some I could load all by myself. Much was found by poking the ground with a tractor crow bar, still buried. There is one piece, from the same site, that my Uncle David had had for years-the loggers exposed the tree more fully.

Our pieces seem to have been a limb, from a MUCH larger tree. There was a chunk not fully uncovered that we didn't manage to uncover enough of to get chains around. So we covered that up best as we could.

Fortunately the landowner came home from vacation and put a stop to the loggers wanton destruction. The owner wasn't overly worried about the petrified wood-in that area it's rather common in streams, he was against tearing stuff up just to tear it up. (though he wasn't against blowing things up just to do it, a few weeks later he nearly blew himself up making 'fireworks' that seemed to actually be napalm, he did blow up his workshop. He built another. He burnt his clothes and most of his hair off, other then a few scorches, he was okay. Physically. Mentally he was crazy to start with, it did calm him down for a while.



Frederick Fossilton says that wood takes as little as 100 years to petrify in the correct conditions. This was buried deep in a creek, exposed by machinery. It would appear to be Oligocene. It was assumed it was palm-but if you can tell, the piece Nobi is on has a branch. The long piece seems to have been the branch.

That would seem to be an assumption-because I can't position them as they were found. I can't budge them a hair. It would seem in my research that palm doesn't branch., and isn't considered wood. At one time we knew what the wood was. All of this illustrates KEEP RECORDS! We had photos, and there was much more wood-it was the 70s. I was 8, none of us knew. Petrified wood and arrowheads were EVERYWHERE.

Splaining: (according to Ricky Ricardo) Above Left: Queen Catherine the Great showing a few pieces of pet wood AND a chunk of rock that was found by a young girl's knee buried in the creek by the wood. She still has the scar. Top Right: Uncle David's Pet Rock Bob-it's a long story, done to irk another Uncle, named Bob. Years ago it had Bob written on it in pink crayon. Done by a girl with a busted knee. Middle Right: long section with a very old red brick. Below Right: The small chunks. They are deceptively heavy. Bottom Left: The green is part of this particular piece-it was dug up. It has a crowbar dent in fact on the bottom.

nuggeteditor@gmail.com

www.nmgms.org



All photos Dana Jones
Frederick by Remy Collins

NMGMS

P.O. Box 1445

Tupelo, MS 38802

Mea Culpa aka The Shin Debacle

(aka Announcements)

Bill Hawkins

Please keep Bill and Floy Hawkins in your thoughts and prayers.

NMGMS ROCK SWAP

The North Mississippi Gem and Mineral Society is having its third annual Rock Swap Picnic October 27, 2012. The Rock Swap will be held at Ballard Park, West Main Street/Highway 6, Tupelo, MS. We would like to invite all rock hounds from the surrounding areas to join our members for a day of great fun, trading and fellowship. There is no charge to attend or to set up and trade. The area is located in a large covered pavilion with many picnic tables. There is room to park and tailgate, or you can set up easy-ups. Indoor restrooms, bike path, outdoor skate park, lake, Oren Dunn Museum and children's playground are close by. Bring something to trade or just come by to join the picnic, look around and visit with fellow rock hounds. The Swap is from 11 a.m. until 4 p.m. (Set up to begin at 9:30 a.m.) The Park closes at 10 p.m. We will be having a club auction (donated items are most welcome!), grab bags for sale and a "Fishing Game". NMGMS will have hot dogs, chips and drinks. Members are asked to bring a dessert and folding chairs.

Field Trip(s) Cont p 6

September's field trip to the Arlington Gravel Pits.

An article is needed for the field trip.



Sheila looking for fossils, photo by Robert Diaz

Andrew taking a break to pose for Robert Diaz.

This trip was with MAGS.
More photos and information are always welcome.



Sunday, November, 4

Joint trip with the Alabama Paleontological Society to an Alabama coal mine for Pennsylvanian plant fossils.

This locale is a coal mine and contains Pennsylvanian plant fossils such as lycopods, sphenophytes, seed ferns and cordaites (ancestors of conifers).

Be sure to bring a hammer, chisel, crowbar, safety glasses, a screwdriver (handy for prying up rock layers), cardboard flats, newspaper, aluminum foil or paper towels for wrapping specimens, paper and pencil for labeling, an old brush for cleaning slabs, drinking water, hat, work gloves, lunch and sunscreen. Be sure to wear sturdy shoes, as there are many rock piles to climb around in and we will be in an active surface.

Contact

Nancy Roberts

THE ROCKHOUNDLADY@YAHOO.COM

731-689-5336H

Meeting time and place: 10 a.m. at the Marathon (gas)/Kangaroo (store) station off of I 59/20 Exit 108 south of Birmingham.

Site: a bituminous coal strip mine.
Formation: Pottsville Group
Age: Lower Pennsylvanian Period, Westphalian - A



This one is utterly humiliating, though it seems no one noticed. In my defense, such as it can be, I'm a horse person. Horses walk on all fours, and though the tibia is in the hind leg, below the knee on the front leg is their SHIN.

More properly called a canon bone, it's more of a metacarpal. Hadrosaurs could and frequently did walk, and even run on 2 legs. Therefore their shin is in their hind leg, not where I indicated last issue which would be the radius/ulna.

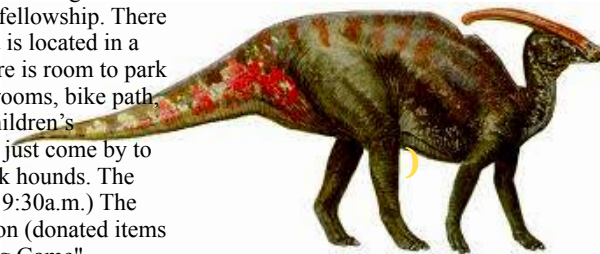
My only defense is that I quite frequently have horse on the brain.

The last issue was out and about maybe 1 hour when I laid down to sleep and it occurred to me I was an idiot.

nuggeteditor@gmail.com

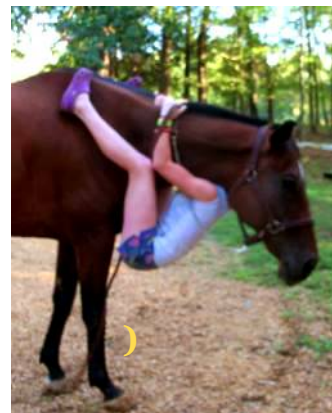
Illustration courtesy of:

<http://hcs.w.1hwy.com/photo.html>



Respective Shin Areas noted. Hadrosaur on the left, Andre the Giant, Thoroughbred being wrestled into cooperation by Remy for display purposes on the right. Andre is a bit smaller than a hadrosaur, but not by much. Obviously he's vicious.

Photo Dana Jones



www.amfed.org/fra/fra_badge.htm

Rockheads

My Trip to William Holland Lapidary School!

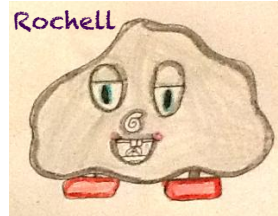
Awesomely written by Klaudia Remy Collins

My mummy told me not to long ago that I would have a chance to go to a lapidary school of my choice if I won an essay contest.

Of course, as I am a pretty good writer as my writing teacher has informed me of many and many of times, I was pretty enlightened of that information.

Mostly, I told them a bout ho much I enjoyed NMGMS, our fossil club, because we have very engrossing meetings, fun field trips, and classes. I also included that I would love to make and sell my jewelry so that people would have a chance to see my full potential. I also tried to make it as articulate as possible.

Later, I found out I had won the contest. Right away, Mummy looked up some schools and i chose William Holland to take a lamp working class. For Five days, I would be able to eat, sleep, and make beads there. The school was in Georgia, and eight hour drive from Mississippi.



When we arrived at the school, right away I felt at home. The people were nice, my teacher was friendly, and the food was AWESOME

So yes we are definitely going back to William Holland. Here Are Some Of The Beads I MADE!!

Photo Dana Jones

Editor's Note: in letting you know of her awesomeness she forgot to add she will be giving a more full coverage next issue.

Field Trip(s)

Continued

October's Field Trip to Birmingham Ridge

A troop of Boy Scout's accompanied us to this location, Brittany and Nancy found a record number of shark teeth, David a sawtooth fish tooth, and Belinda kicked off a mad dash of Mosasaur vertebra finding. It was a beautiful day for all.



Top From left: 3 of Brittany's squalicorax teeth, and one enchodus (bony fish) by Jim Roberts, Mosasaur Verts photo by Dana Jones
Middle from left: a fossil slice of bread, photo by Brittany Lambert, a pycnodonte/left and exogyra/right photo by Nancy Roberts
Bottom sawfish tooth found by Roger Loyd, Belinda with the first Mosasaur vert found which was being eaten by Marcasite. . Both photos by Dana
Bottom left: agerostrea-ribbon oysters. Photo by Nancy
Nancy and Brittany fund an unfair amount of teeth, a Boy Scout had a wonderful Mosasaur tooth, Belinda totaled 5 verts, Dana found two contiguous verts which for her is a holy find (she likes to connect bones even when she labels them wrong like the Shin Debaque.



nuggeteditor@gmail.com
www.nmgms.org

Meeting Program

The Rockheads displayed their talents last meeting. Andrew brought a lovely display of his finds, including an envy inducing crinoid.



Above: Remy posing by her display, it featured some of her favorite fossils, and information on the Jackson Dome Volcano deposits found near her house, along with some more detail on her creations of Rochell, Frederick, and Riboletta-Frederick's 'horse'.
Left: Nikki and Matthew in deep discussion concerning his display of agates gathered from the field trip to the Arlington Gravel Pit. He's also modeling Bernie's vest sans badges. Work on those badges guys!!!

Be Safe-Know Your Route

Always, but always be sure to take a map on long road trips. Even short ones to a new place.

Have a paper map as a back up, definitely a good state map, print one from the site of your choice. Double check your route before leaving.

Compare it with the paper map.

A compass wouldn't hurt.

Not all gas stations or stores carry maps these days thanks to GPS, and there is no guarantee they'll have the one you need even if they do.

Plus. Not all station attendants speak a language you do.

You may think "I have a Super Phone".

Until it shorts out.

You may think you know north/south/east/west.

There are weather conditions that render even the most sensitive directional sense useless, in addition to exhaustion. A decent plain magnet compass, remember fried phones-if an old fashioned compass is rendered inoperative you have probably entered the Zombie Apocalypse and direction should no longer be top on your list, it better be protective clothing, then water/direction.

By Dana Jones

Bob Reinhaus sent in this lovely photo from his travels.

This is Yellowstone last fall.

He's traveling through Colorado currently-or was, I believe he's returned by now.

Read the Footnotes

We need submissions for the newsletter, photos, articles, tips, comments on what you like and don't like. It's Halloween, so we have Petrified Wood, and a silly safety article.

A William Holland write up will be in the next issue from the club's scholarship recipients, there was a lack of time to get one together properly for this issue, Remy, the SFMS Junior Scholarship recipient will write a more in depth follow up as well.

Contact Dana Jones
nuggeteditor@gmail.com

NMGMS
P.O. Box 1445
Tupelo, MS 38802